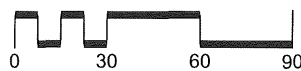


END TRAIL SEGMENT 1  
STA. = 520+97.38

BEGIN TRAIL SEGMENT 2  
STA. = 530+00.00

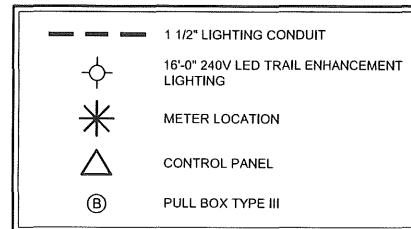
SKIATOOK CENTRAL PARK

BOP STA. = 514+76.38

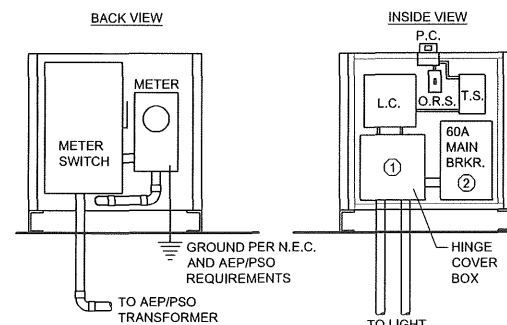


Thomas Keeter, PE#17749  
TFK Engineering CofA 5206  
expires 6/2019

**LIGHTING LEGEND**



**GENERAL NOTE:**  
ALL ELECTRICAL WORK SHALL BE COMPLETED BY A LICENSED ELECTRICIAN AND APPROVED BY THE CITY OF SKIATOOK. THE COST FOR ALL NECESSARY PERMITS/FEE'S SHALL BE INCLUDED IN THE UNIT PRICE BD FOR 824(C)-(SP) CABINET.

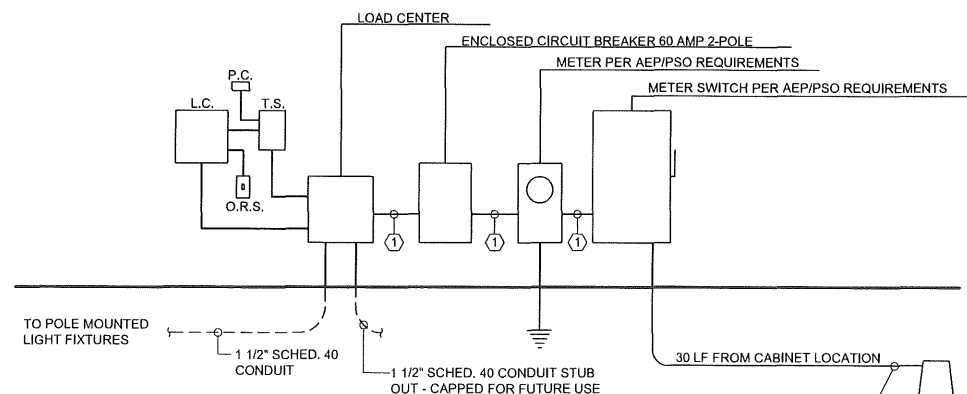


- KEY NOTES:**
- LOAD CENTER - 240/120V-1PH  
1- 20 / 2 LIGHTS  
1- 20 / 1 RECEPTACLES  
1- 20 / 2 FUTURE USE  
1- 20 / 1 FUTURE USE
  - SURFACE ENCLOSED CIRCUIT BREAKER SQUARE "D" FA 60 AMP 2-POLE. FURNISH NEUTRAL AND GROUND BAR.
- P.C. = TORK 2100 SERIES PHOTO CELL  
O.R.S. = P+S 20AC1-1 OVERRIDE SWITCH  
T.S. = SYLVANIA SA 306 (DPST) DIGITAL INDUSTRIAL TIME SWITCH  
L.C. = ASCO 917 SERIES LIGHTING CONTACTOR AND ENCLOSURE WITH (4) SPARE CONTACTS

**ELECTRIC CABINET (CONTROL PANEL) LAYOUT**

NOT TO SCALE

**WIRE AND CONDUIT SIZE FOR SERVICE:**  
① 2" CONDUIT WITH (3) #4 THWN CU. AND (1) #6 THWN CU. GROUND TYP.

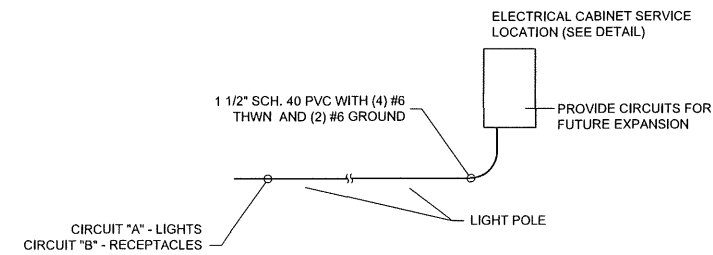
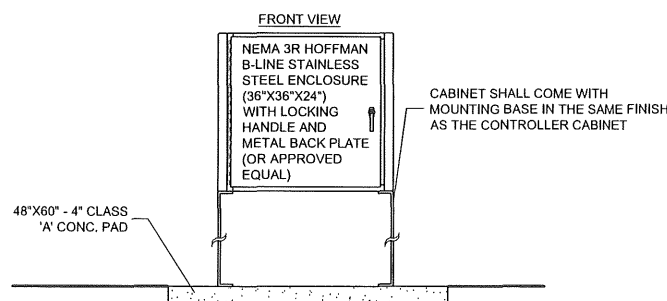


**ONE LINE DIAGRAM**

NOT TO SCALE

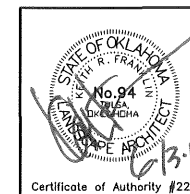
3" SCHED 40 CONDUIT FROM CABINET LOCATION INCLUDING PULL WIRE SHALL BE SUPPLIED BY CONTRACTOR. CONTRACTOR SHALL CO-ORDINATE WITH BRAD WHITE (918) 396-2797 FOR ELECTRICAL SERVICE. THE CITY OF SKIATOOK SHALL PROVIDE THE 240V ELECTRICAL SERVICE TO THE CABINET

CONSTRUCT PULL BOX TYPE III AT TERMINUS OF CONDUIT. INSTALLATION INCLUDES PULL WIRE. PULL BOX SHALL BE LOCATED BY BRAD WHITE



**WIRE AND CONDUIT SIZE FOR LIGHTING (DIAGRAMMATIC)**

NOT TO SCALE



Osage Prairie Trail Extension

Design	JM	8/16
Drawn	JM/BB	8/16
Checked	JM/KF	6/17
Approved		
Squad		

PREPARED BY:  
**LANDPLAN CONSULTANTS**  
1110 West 23rd Street TULSA, OK 74107 918-584-6464

**LIGHTING PLAN**